

# Scalar Energy Pendant

*More Energy, Boosted Vitality and Better Health ....*

Now, you can achieve better health and greater vitality, by neutralising negative energies, and re-charging your body's energy field with the right energy frequencies using the Scalar Energy Pendant.

Using advanced nanotechnology know-how, with natural minerals structurally bonded together, the Scalar Energy Pendant restores balance and harmony to the body.

The Scalar Energy Pendant is tested to emit FIR, scalar energy and negative ions, and contains Germanium 99.999%.



Scalar Energy Pendant

## What is the Scalar Energy Pendant made from?

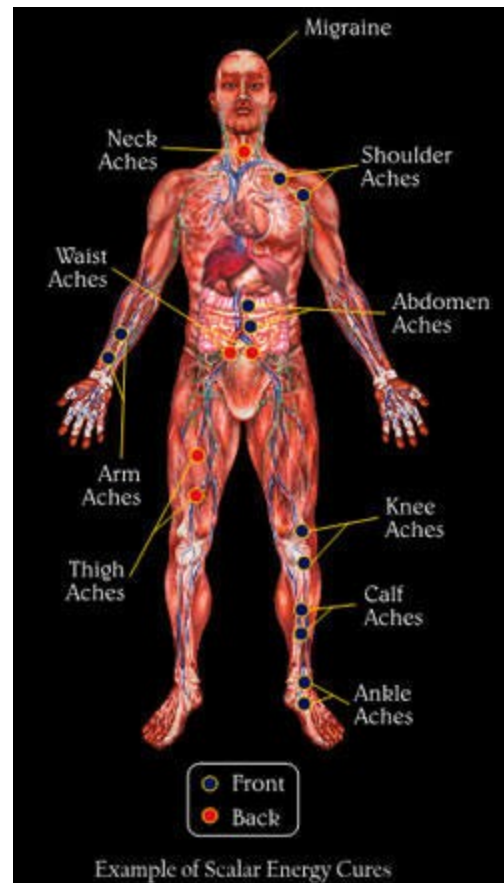
The Scalar Energy Pendant is a mineral based high-tech formulated energy pendant, made from volcanic lava, using Japanese technology

**By wearing the Scalar Energy Pendant, you will effectively achieve the following benefits;**

- Improved blood circulation
- Better stamina, endurance and strength
- Enhances Immune and Endocrine Systems
- Enhances Cellular Nutrition and Detoxification
- Enhances Cellular Permeability
- Reduces Inflammation
- A calmer mind and sharper focus/concentration
- Alleviates soreness, aches and pains; improved flexibility
- Energises blood cells and reduces "stickiness" in blood cells
- Neutralises Harmful Energies; Strengthens Your Body's Bio-Energy field to protect from harmful electromagnetic waves
- Restores balance and harmony to the body and increases your energy levels

## About the Scalar Energy Pendant

**Improving Circulation and Balancing the Body's Bio-**



## Energy Field

Our bodies are made of energy. To achieve and maintain vibrant health, we must protect our energy frequency and flow (or circulation) throughout the body.

The principles of energy medicine originate from quantum physics. Everything in the universe is made of energy. Like all matter, the human body is not just made up of physical and chemical structures, it also has subtle energy fields known as bio-energy. We continuously radiate, absorb and conduct frequency waves of energy. Bio-energy is crucial to life and is sometimes called "the biofield", "vital energy", "aura", "Qi" (Chinese), "Prana" (India), "Mana" (Polynesian), "Barraka" (Islamic), "Ki" (Japanese), etc. To attain and maintain vibrant health, we must protect the vital bio-energy flow throughout our body. It must be free-flowing, and in perfect vibration or frequency. Any disruption or imbalance to the bio-energy pathways or "vibrations" can lead to disharmony, ill health and disease.

Unfortunately, many factors such as stress, pollution, increasing radiation from electromagnetic waves (mobile phone, radio, computer, television, microwave oven, wireless, etc), sedentary lifestyle, poor water quality and poor diet, can weaken the body's bio-energy or disrupt its flow and circulation.



The Cardiovascular System

### **FIR : Improves Circulation and Energises Bodily Fluids**

The total length of the blood vessels in the human body is 60,000km long! Imagine blood having to travel that distance every 7 minutes to deliver oxygen and nutrients to all the cells, and to remove waste material from them. Numerous studies have shown that FIR dilates capillary vessels, thus facilitating blood circulation for better oxygen and nutrient delivery, and also allowing for more effective toxin removal.

Some toxic gases, including carbon dioxide, or heavy metals like mercury and chlorine are easily trapped in large water clusters in the body. FIR causes the water molecules to vibrate, resulting in the breakdown of their cluster size. Consequently, trapped toxic waste gases and other toxic materials are released, and ultimately flushed from the body. Together with the improved circulation, the reduced water cluster size in the body will result in improve cellular function, better energy and vitality. For people who suffer from aches and pains, FIR offers the welcome relief of improved flexibility and mobility, as well as the disappearance of pain and stiffness.

### **Scalar Energy : Strengthens and Restores Balance to the Body's Bio-Energy**

Scalar Energy Waves

First discovered by James Clerk Maxwell in the 19th century, and proven by Nikola Tesla, Scalar energy existence is also acknowledged by Nobel Prize winner, Albert Einstein, Researchers at the Max Planck Institute, Germany, found that scalar energy unclumps and activates living cells. Scalar energy also increases cellular energy for trillions of cells and overall body energy levels, and nullifies the harmful effects of man made frequencies. Together, this helps to balance and strengthen the body's bio-energy.

You can read more in-depth into the scientific detail of scalar energy by clicking [here](#).

#### Germanium : Facilitates The Conductivity and Flow of Bio-Energy

Since 1858, in Lourdes, a small town in south-western France, many purportedly found that their pain, aches and illnesses miraculously disappeared after dipping into a spring, now known as the famous "Holy Spring of Lourdes". Scientists later attributed the spring's healing properties to its high content of Germanium.

The Holy Spring of Lourdes, rich in the mineral Germanium

One of the most fundamental properties of Germanium is its semi-conductivity, i.e. its ability to donate and receive electrons easily. Many of Germanium's healing properties may be due to this intrinsic electronic quality. Coupled with its ability to neutralise the effects of positive ions that can impede the smooth flow of energy, Germanium is able to "correct" and facilitate the flow of the body's bio-energy, hence, increasing energy levels, and relieving pain and stiffness.

#### **Negative Ions: Invigorate and Refresh The Mind and Body**

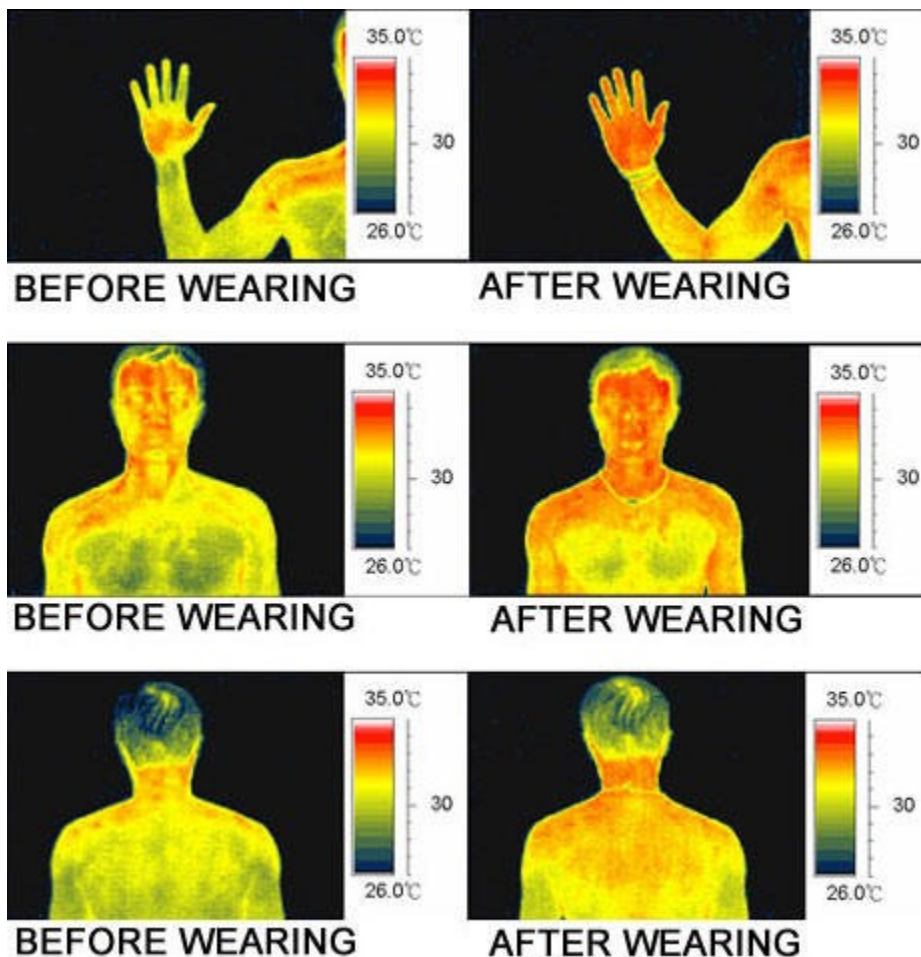
Ever wondered why the air feels more invigorating and you feel fresher when you are at the waterfall or in the mountains? This is due to the abundance of "feel good" negative ions in the air. Research has confirmed the beneficial effects of negative ions on living things - plants grow faster and healthier, animals are calmer and perform tasks better, and humans become less stressed and more alert.

Negative ions have been found to facilitate the delivery of oxygen to cells, which stimulate bodily functions and rejuvenation. They also increase the flow of oxygen to the brain; resulting in higher alertness, decreased drowsiness, and more mental energy. Studies have also shown that negative ions help to lift mood, alleviate depression and stimulate body's reticuloendothelial system: a group of defence cells in our bodies which marshal our resistance to disease.

Unfortunately, air-conditioning, exhaust fumes, cigarette smoke, fluorescent lighting, cellular phones, electrical and electronic equipment, TV and computer screens - all these adversely deplete negative ions from our surroundings and instead increase positive ions, which have been linked to muscle and joint aches, irritability, mood swings, headaches, insomnia, lethargy, lessened efficiency and general lack of health.

#### Evidence on Enhanced Blood Flow in the Body

The above image shows blood cells microscopically before and after wearing the Scalar Energy Pendant. The blood cells in normal people usually clump together as shown in the photo on the left, resulting in a reduced supply of oxygen to the cells in the body. After wearing the Scalar Energy Pendant, the blood cells unclump, and oxygen is effectively able to be delivered more effectively to the body, resulting in better energy and improved health. The enhanced blood flow in the body is also evident in the thermal imaging photos shown below.



## Instructions on Using the Scalar Energy Pendant

Tips on Therapeutic Application of the Scalar Energy Pendant



1. Wear the Scalar Energy Pendant over the neck or chest.
2. To use the pendant therapeutically, place it directly on the affected bodily area (e.g. knee, back, shoulder, ankle, etc.) to relieve stiffness or soreness.



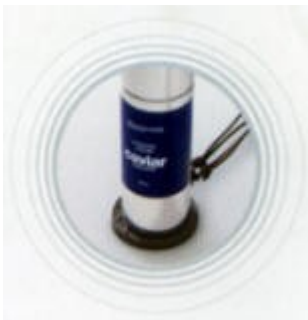
Place on the forehead to relieve headache and for relaxation.



Place over the abdomen to relieve period pain, bloatedness or stomach ache.



Place the Pendant at each of the four corners of your bed to create an energy field. This energy field can help to energise you while you sleep. You'll sleep better and wake up feeling fresher.



Place the Pendant underneath your skin care bottles to improve their absorption and efficacy. Place the Pendant underneath your skin care bottle to help break down the molecules of the ingredients for better absorption.





Leave the Pendant in your refrigerator to lower the temperature and keep food fresher longer. Tests show that leaving the Pendant in the refrigerator can keep fruits and vegetables fresher longer. It can also lower the temperature so you can save electricity.



Water your plants or fill your flower vase with water energized using the Scalar Energy Pendant to keep your plants healthy, and flowers fresh longer.



Children and athletes who wear the Pendant can improve their energy, flexibility and concentration levels. Children who wear the Pendant have improved mental focus and perform better in class. Athletes can achieve better performance with improved flexibility and concentration.



The elderly enjoy better balance and stability when they wear the Pendant. This test shows that after wearing the Pendant, you are better able to balance yourself.



Place the Pendant in your aquarium to keep your fish healthy. Place the Pendant in your aquarium to keep your fish healthy, more energetic and their colours more vibrant.

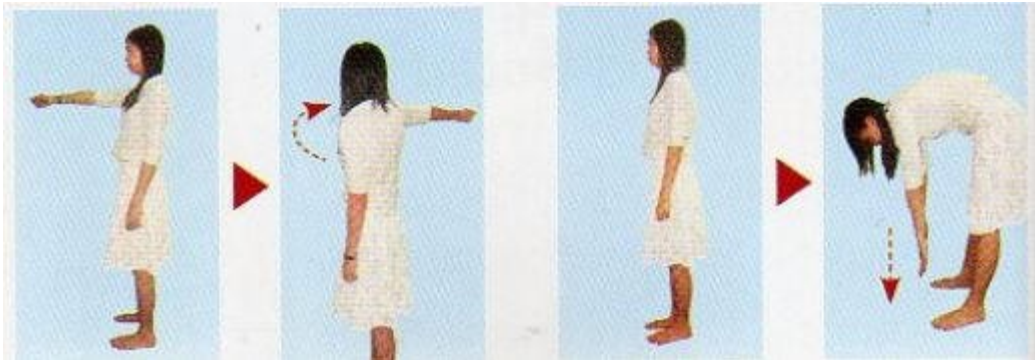
## Tests

Try the tests below and see how the Scalar Energy Pendant can improve your flexibility, strength and balance.

### Flexibility test

Stand straight with both legs slightly apart. Extend your right arm in front of you, 90° perpendicular to the body, while making a fist with your thumb pointing away from you. Slowly turn your upper body in a clockwise position as far back as you can reach. Note the farthest position you can reach. Repeat the test wearing Scalar Energy Pendant. With Scalar Energy Pendant, you'll be more flexible, and able to turn your body farther.

Stand straight with both legs slightly apart. Slowly bend over, reaching as far down as you can to touch your toes. Repeat the test wearing Scalar Energy Pendant. With Scalar Energy Pendant, you'll be more flexible, and are able to bend farther down.



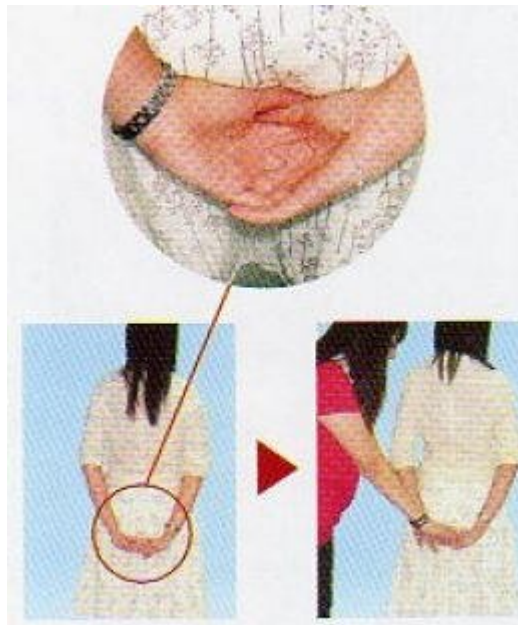
Flexibility Test

### Strength test

Stand straight with both legs slightly apart.

Place both hands straight behind your back with fingers in an interlocking position. Get a friend to press down on your interlocked fingers as you resist with all your strength.

Repeat the test with Scalar Energy Pendant. Scalar Energy Pendant will enable you to resist better, and be stronger while wearing the pendant.

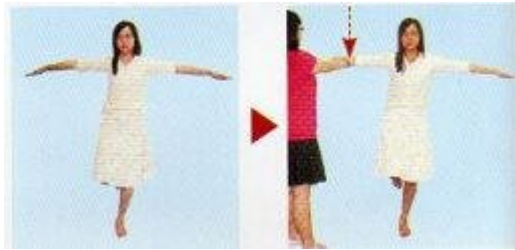


Strength Test

### Balance Test

Balance yourself on one leg, and lift both arms to the side until they are 90° perpendicular to the body. Get a friend to try tipping your balance by pressing down on either arm, while you attempt to keep your balance.

Repeat the test wearing Scalar Energy Pendant. You will notice that you are better able to keep your balance with the pendant.



Balance Test

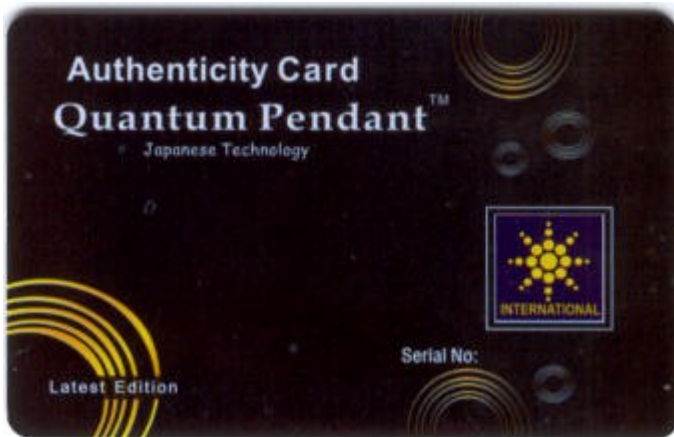
Lemon tastes less sour!

Slice a lemon. Place one slice on a thin plate with Scalar Energy Pendant underneath. Place another slice on a plate without the pendant at least 3 feet away from the other plate. Set them aside for 20-30 minutes. Taste and compare the lemon "treated" with Scalar Energy Pendant and then taste the "untreated" one. The "treated" lemon tastes significantly less sour. This proves that even without being in actual contact with the lemon, the energy in the pendant is able to change the molecules in the lemon.

Repeat with liquor, soy sauce, and salt! You'd be amazed that they taste or smell different.

Ice Melts Faster!

Place one ice cube on top of Scalar Energy Pendant and another on a plate. Note that the ice cube on top of Scalar Energy Pendant will melt faster than the one left on a plate. This shows that the energy in the pendant is able to activate the molecules in the ice causing the ice to melt faster even when the temperature of the pendant remains cold. We challenge you to repeat this test with other energy pendants!



The Scalar Energy Pendant comes in a gift box with an authenticity card to satisfy your peace of mind for genuineness of this product.

Note: the authenticity cards are supplied by the manufacturer for the supplier to optionally imprint a serial number. Natures Energies does not take this step. The cards are therefore provided as shown in the above picture.

"I absolutely LOVE your products and company, where else can I look for the much needed devices? Thank you for this opportunity to express to you my gratitude for the scalar energy pendant. I am so excited to tell you that I was able to heal much faster wearing the medallion. Thank you so very much. Much love to you all there and please keep up the fantastic work you are doing for all of us on this planet." *A Tobiness, CA, U.S.A*





<b>Material</b>	<b>Color</b>	<b>Dimension (in/cm)</b>	<b>Weight (oz/g)</b>
Earth Material (Germanium Rich Volcanic Lava)	Black	Diameter: 1.6 / 4.2 Thickness: 0.15 / 0.4	Pendant: 0.6 / 17 With Case: 2.3 / 65